

Leica DISTO™ with Bluetooth® on



V 1.0

August 2015

- when it has to be **right**

Leica
Geosystems

The Leica DISTO™ devices with Bluetooth®



Leica DISTO™ D110
Leica DISTO™ E7100i

→ Requires
Bluetooth® 4.0



Leica DISTO™ D3a BT
Leica DISTO™ D330i

→ Requires **SPP** support



Leica DISTO™ D8

→ Requires **SPP** support



Leica DISTO™ D510
Leica DISTO™ E7500i

→ Requires
Bluetooth® 4.0



Leica DISTO™ D810 touch

→ Requires
Bluetooth® 4.0



Leica DISTO™ S910

→ Requires
Bluetooth® 4.0

- when it has to be **right**



Leica DISTO™ Bluetooth®



Getting started










- when it has to be **right**

Leica
Geosystems

General

Bluetooth® Smart

- Bluetooth® Smart is compatible with Bluetooth® 4.0 or Bluetooth® Smart Ready devices
- Bluetooth® Smart has very low power consumption. This is why it is by default switched on

If your product bears this logo...	It's compatible with products bearing any of these logos...
	  
	 
	

- when it has to be **right**

Leica DISTO™ D110

Leica DISTO™ E7100i

Bluetooth® Smart

- The Bluetooth® can be switched off and on at the Leica DISTO™ D110
- The Leica DISTO™ D110 supports the connection to Windows*, iOS or Android**



Press for 2 sec. to switch
Bluetooth® on or off

Leica DISTO™ D510

Leica DISTO™ E7500i

Bluetooth® Smart

- The Bluetooth® can be switched off in the Settings of the Leica DISTO™ D510
- The Leica DISTO™ D510 supports the connection to Windows*, iOS or Android**



Leica DISTO™ D810 touch Bluetooth® Smart

- The Bluetooth® can be switched off in the Settings of the Leica DISTO™ D810 touch
- The Leica DISTO™ D810 touch supports the connection to Windows*, iOS or Android**



Leica DISTO™ S910

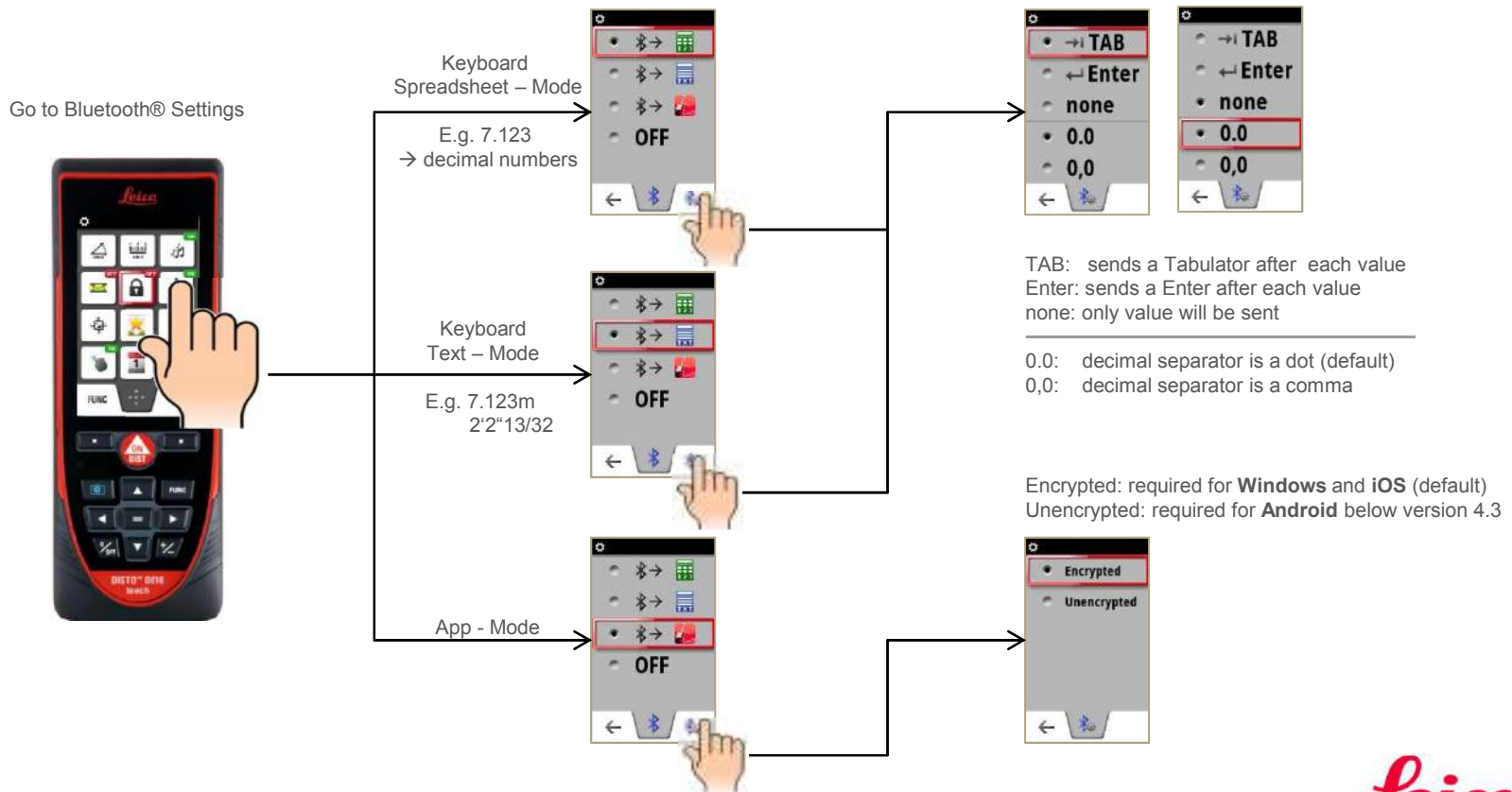
Bluetooth® Smart

- The Bluetooth® can be switched off in the Settings of the Leica DISTO™ S910
- The Leica DISTO™ S910 supports the connection to Windows*, iOS or Android**



Leica DISTO™ D810 touch Bluetooth® Smart

- The Leica DISTO™ D810 touch provides 3 different modes for use with Bluetooth®

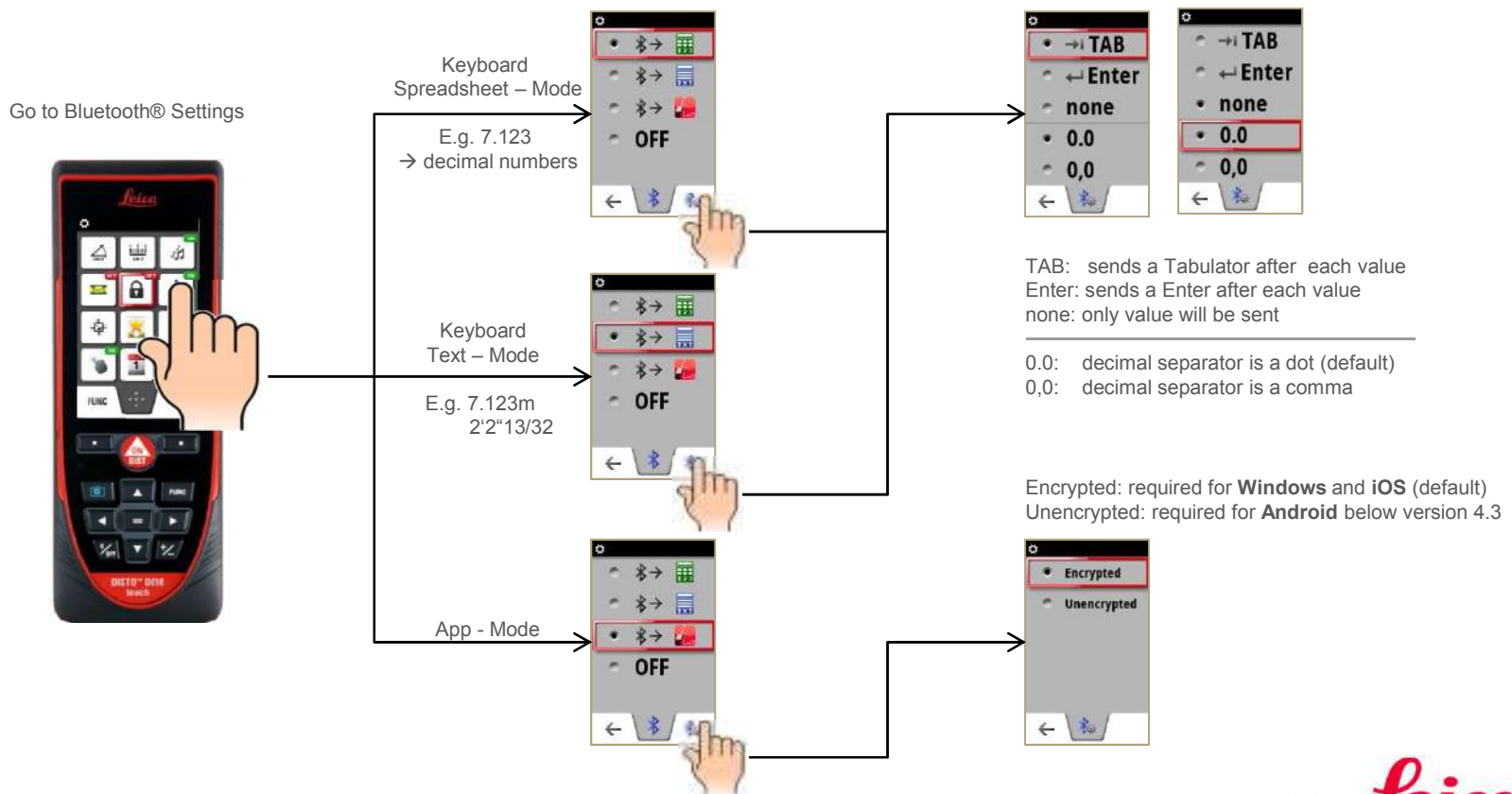


- when it has to be **right**



Leica DISTO™ S910 touch Bluetooth® Smart

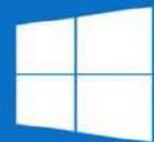
- The Leica DISTO™ S910 provides 3 different modes for use with Bluetooth®



- when it has to be **right**



DISTO™ with



Windows 10

Getting started

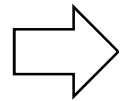
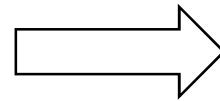
- when it has to be **right**

Leica
Geosystems

DISTO™ for Windows 10

How to connect

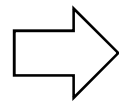
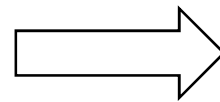
Windows 10 in desktop mode



Click on the „action centre“

click on „Connect“

Windows 10 in tablet mode



Swipe in from the right side

tap on „Connect“

- when it has to be **right**

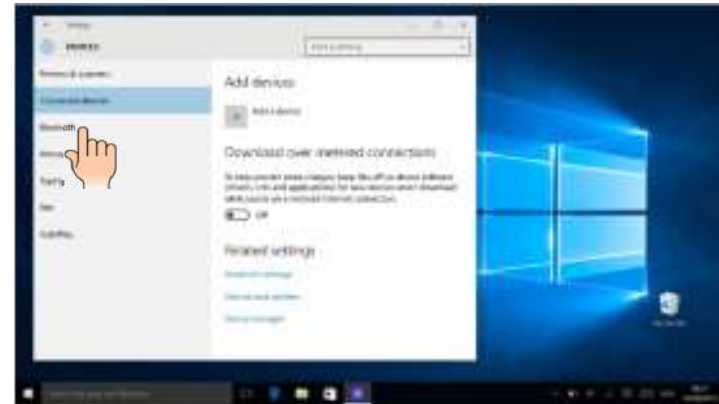
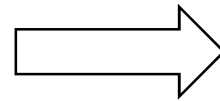


DISTO™ for Windows 10

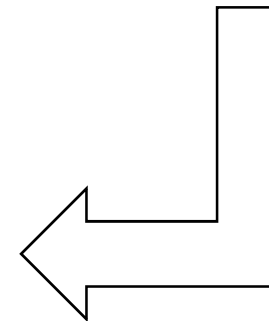
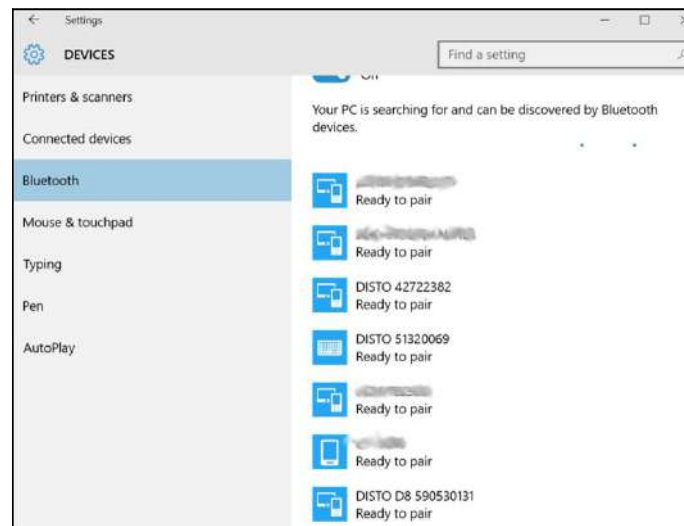
How to connect



Click on „find other type of devices“



Select „Bluetooth“



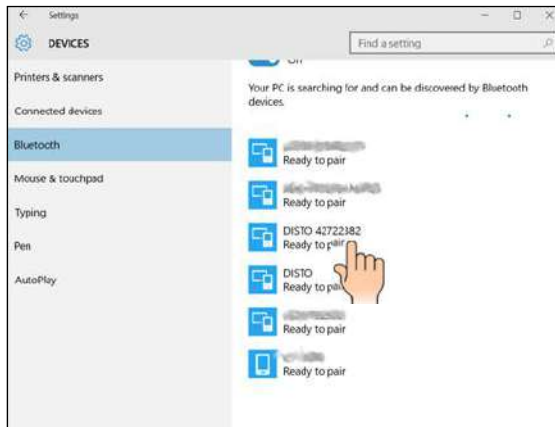
Find your DISTO™ in the list

- when it has to be **right**

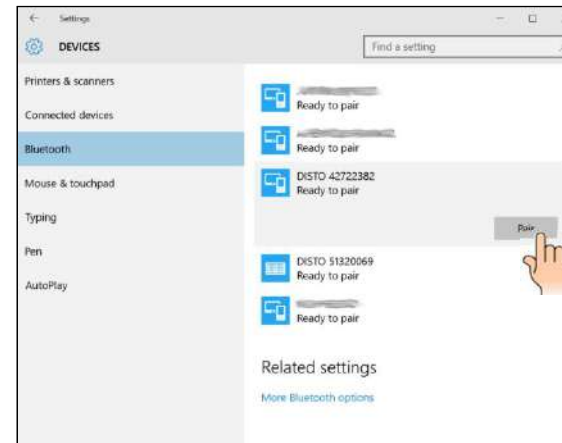


DISTO™ for Windows 10

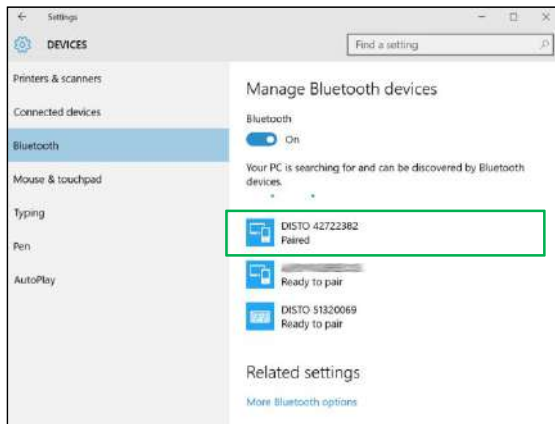
How to connect - DISTO™ D110 (E7100i) - DISTO™ D510 (E7500i)



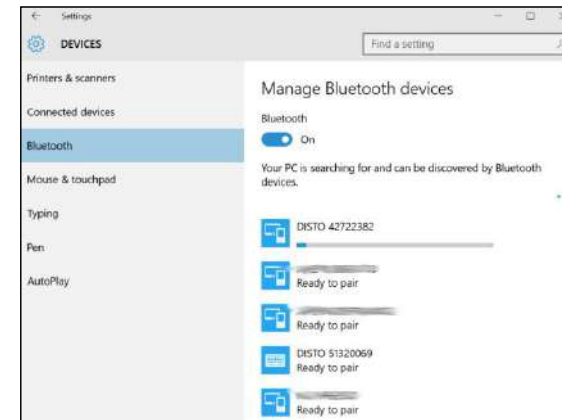
Tap your DISTO™



Select „Pair“



DISTO™ is connected



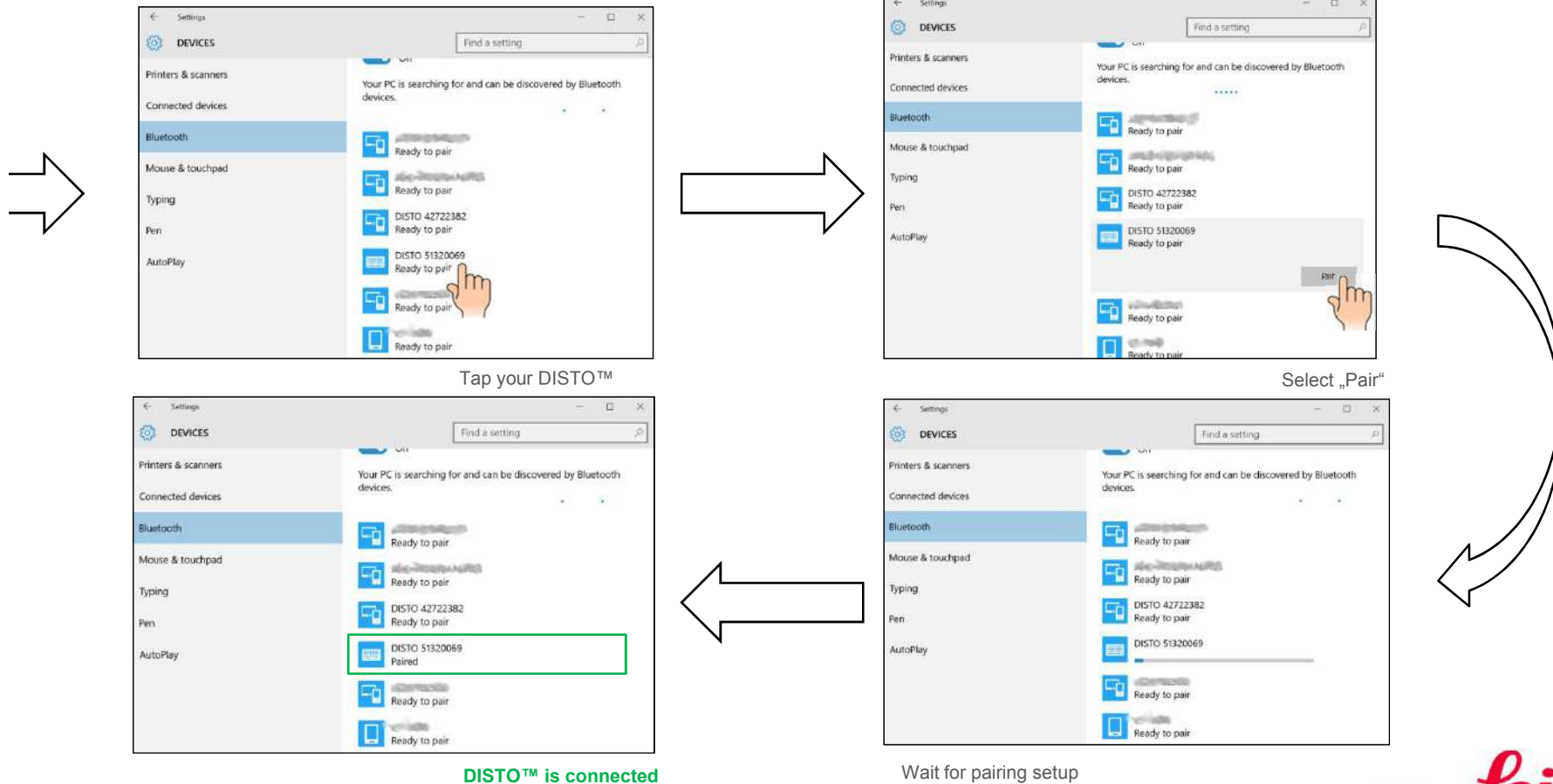
Wait for pairing setup

- when it has to be **right**



DISTO™ for Windows 10

How to connect - DISTO™ D810 touch - DISTO™ S910



Tap your DISTO™

Select „Pair“

DISTO™ is connected

Wait for pairing setup

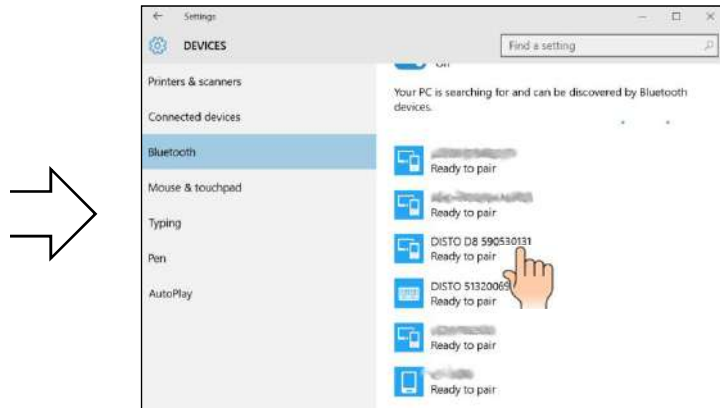
- when it has to be right



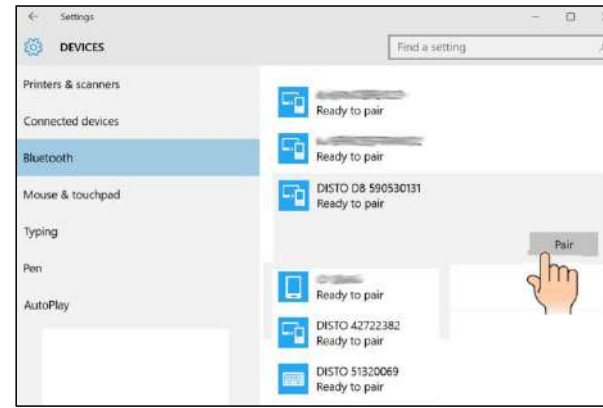
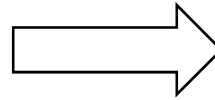
DISTO™ for Windows 10

How to connect - DISTO™ D8

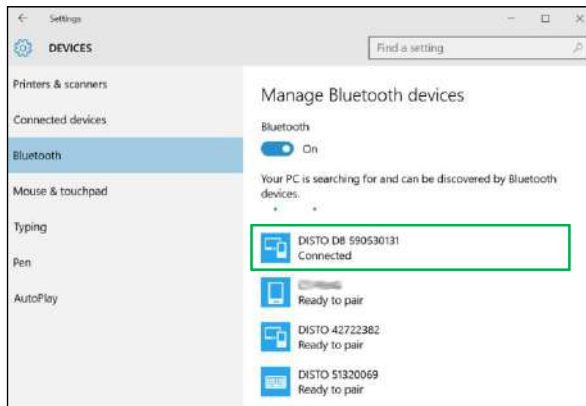
- DISTO™ D3aBT (D330i)



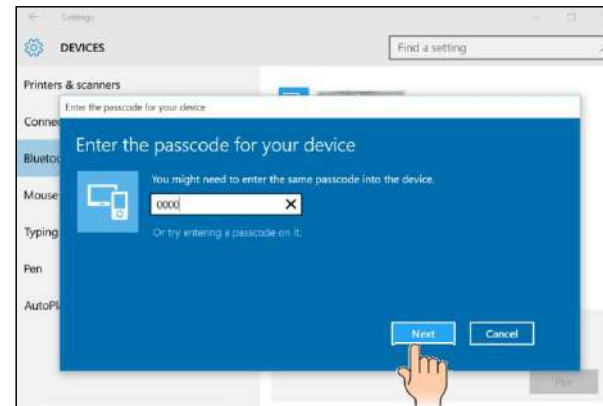
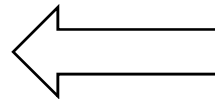
Tap your DISTO™



Select „Pair“



DISTO™ is connected



Enter pairing code «0000» and click next

- when it has to be **right**



DISTO™ for Windows 10

How to go on



Leica DISTO™ D110
Leica DISTO™ E7100i



Leica DISTO™ D3a BT
Leica DISTO™ D330i



Leica DISTO™ D8



Leica DISTO™ D510
Leica DISTO™ E7500i



Leica DISTO™ D810 touch



Leica DISTO™ S910

These DISTO™ devices can be used right away – continue on page 27

These DISTO™ devices can be used with DISTO™ transfer – continue on the next page

- when it has to be **right**

Leica
Geosystems

DISTO™ transfer PC



Getting started

- when it has to be **right**

Leica
Geosystems

DISTO™ transfer PC

General purposes

DISTO™ transfer for PC follows following purposes

- 1. Receiving data from a Leica DISTO™ and forward it to current cursor position. E.g. running in the background put the cursor to an Excel cell to input data but instead of typing data on keyboard just send them via Bluetooth® interface**
- 2. Use DISTO™ transfer as a Plugin for AutoCAD (version from 2004) or BricsCAD (version from 9.3.5) to directly draw a plan in the system.**
 - Make sure the DISTO™ transfer has been installed after your CAD installation or manually start the DISTO™ transfer before using it as a Plugin
 - To start the Plugin for Autocad® and Bricscad you have to start the corresponding CAD software and write the command „leicadisto“ in the command field. If Leica DISTO™ transfer is not already open it will be opened now automatically.
 - Click in the drawing area and start transferring distances. If you transfer distance and inclination the horizontal distance will be calculated and used in drawings.
 - If the inclination is more than 75° it will be interpreted as a vertical distance and used as a height. Only one height can be entered per layout (change to 3D view to see the three dimensional drawing).

Getting started

- Download the latest version of DISTO™ transfer PC (Version 4.0 or higher) from our Leica DISTO™ webpage:

<http://ptd.leica-geosystems.com/common/shared/downloads/inc/downloader.asp?id=11064>

- Follow instructions during the download.



The DISTO™ transfer works on all Windows operating systems from version Windows XP onwards with Bluetooth® 2.1. Only on Windows 10 devices the Bluetooth® 4 of the computer hardware is supported.

DISTO™ transfer for Windows 10

Start Software

- Press Program Icon to start



- Startscreen will appear



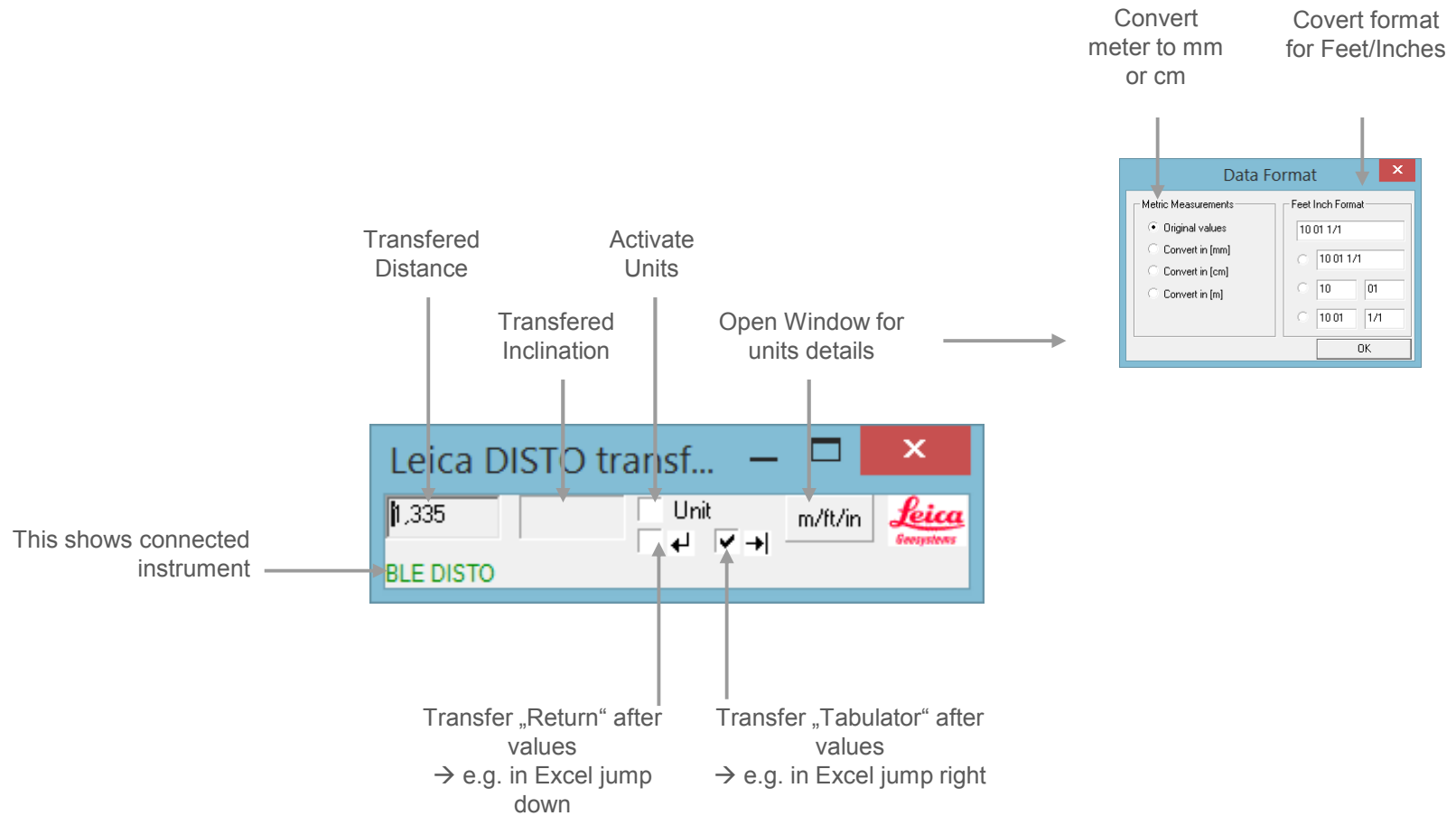
- DISTO™ transfer starts immediately if a Bluetooth® smart device is paired. If only Bluetooth® 2.1 or no device is available, the following selection menu will appear:



- when it has to be **right**

DISTO™ transfer for Windows 10

Options Overview

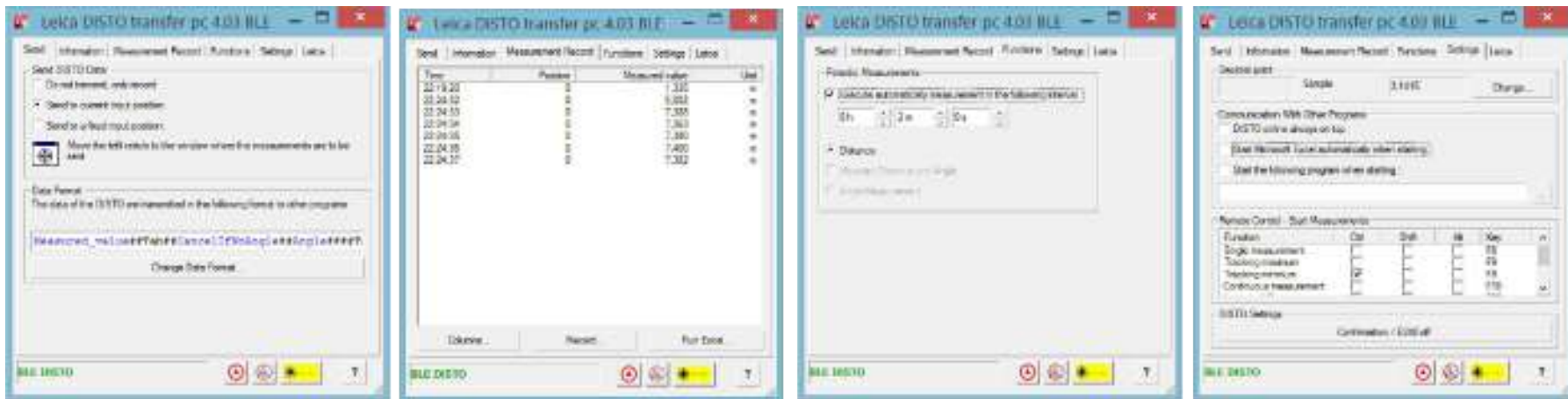


- when it has to be right



DISTO™ transfer for Windows 10

Options Overview – advanced mode



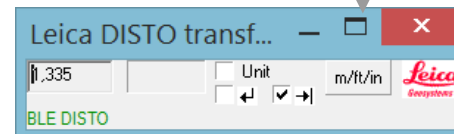
Enter format of data into other programs (e.g. CAD tools)

Record data as they arrive to DISTO™ transfer

Enter repeatability of measurements

Enter other settings

Press Maximize to get additional options



- when it has to be right



DISTO™ transfer for Windows 10

Good to know

- If you want to unpair device to prevent automatic detection either switch off Bluetooth® at DISTO™ or press „Remove device“ in the settings of the Windows 10 device.
To Remove a device in Windows 10 proceed to the same menu like for adding a device.



When a Leica DISTO™ D810 touch or Leica DISTO™ S910 is already paired with one iOS or Windows 10 device it cannot be paired with a second device at the same time, it needs to be unpaired first!

- To use DISTO™ transfer as a Plugin make sure your CAD program supports Plugin. So e.g. AutoCAD LT versions or free test downloads do not support Plugins.
- Bluetooth® smart does not support sending data from the computer to the DISTO™. So functions related to sending data to DISTO™ are not applicable for these products.

DISTO™ transfer for Windows 10

Leica DISTO™ D8 and Leica DISTO™ D3aBT (D330i)



If DISTO™ transfer does not recognize your DISTO™ even though you are connected to the Windows 10 device, please start the configuration program in the start menu:



- when it has to be **right**



DISTO™ transfer for Windows 10

Leica DISTO™ D8 and Leica DISTO™ D3aBT (D330i)

Please Note

Now check the „Always use the Microsoft BT Stack...“ setting, press ok and restart DISTO™ transfer



- when it has to be right

Leica
Geosystems

Keyboard Mode



Getting started

- when it has to be **right**

Leica
Geosystems

Keyboard Mode for Windows 10

How to start

- This mode is supported by the **Leica DISTO™ D810 touch and Leica DISTO™ S910**
- Please use the Bluetooth® manager to pair the devices. Once the Windows 10 device and the Leica DISTO™ are paired they will immediately connect if both are switched on (see page 15)
- The Leica DISTO™ will be considered as a keyboard. So by sending a measurement, the Windows 10 device believes you are writing the value from a keyboard.

Keyboard Mode for Windows 10

How to start

- You need to either set the Leica DISTO™ D810 touch or Leica DISTO™ S910 to either of the following modes (see also page 9 of this presentation)

- Spreadsheet mode:
Use for sending decimal values without unit for further calculation

- Text mode:
Use for sending values on the device display incl. unit for documentation



Keyboard Mode for Windows 10

How to send data and navigate in a Program

- After the devices are connected, the favorite keys will change for sending measurement values or navigation



If switched on the Arrow keys on the DISTO™ can be used for navigation on e.g. Excel

Sends the actual value in the main-line of the DISTO™ to the current cursor position of any App

Keyboard Mode for Windows 10

Good to know

- If you want to unpair device to prevent automatic detection either switch off Bluetooth® at DISTO™ or press „Remove device“ in the settings of the Windows 10 device.
To Remove a device in Windows 10 proceed to the same menu like for adding a device.



When a Leica DISTO™ D810 touch or Leica DISTO™ S910 is already paired with one iOS or Windows 10 device it cannot be paired with a second device at the same time, it needs to be unpaired first!

Keyboard Mode for Windows 10

Good to know

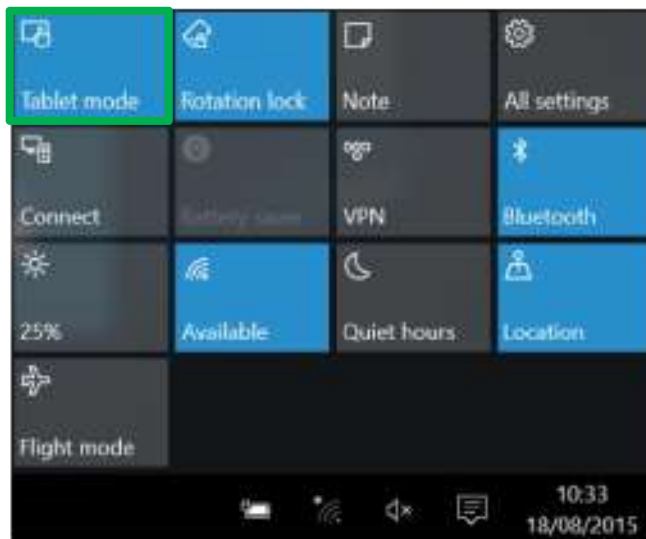


Windows 10 supports tablet mode



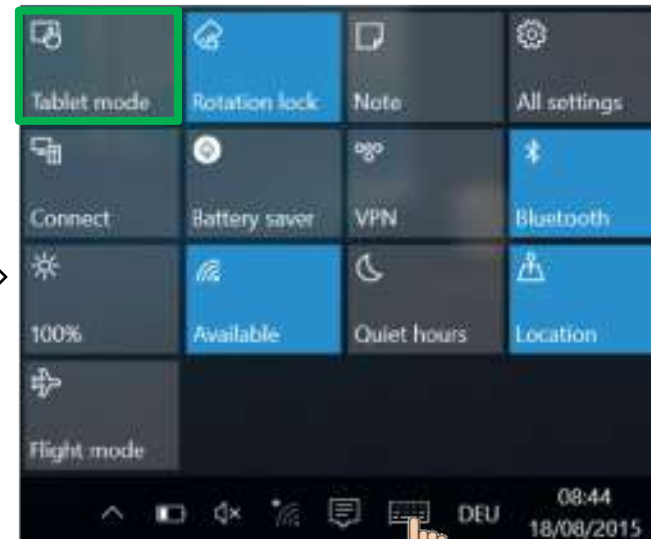
Once you use the keyboard mode and send values, the keyboard on the display does not come up again. Switch to desktop mode. Within the task bar you can manually open the keyboard again

Windows 10 tablet mode



Tap on «tablet mode» to enable or disable it.

Windows 10 desktop mode



In desktop mode you can open the keyboard

- when it has to be right