

# USER MANUAL

RC-5/RC-5+/RC-5+TE

English	1 - 8
Deutsch	9 - 16
Português	17 - 24
Español	25 - 32
Français	33 - 40
Italiano	41 - 48
Русский	49 - 56
한국어	57 - 64
日本語	65 - 72

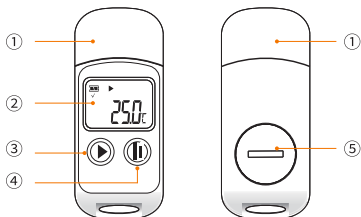
**Elitech<sup>®</sup>**

*Innovation Preceding All*

## Overview

The RC-5 series are used to record the temperature/humidity of foods, medicines and other goods during storage, transportation and in each stage of the cold chain including cooler bags, cooling cabinets, medicine cabinets, refrigerators, laboratories, reefer containers and trucks.

RC-5 is a classic USB temperature data logger used in a wide range of applications around the world. RC-5+ is an upgraded version that adds the functions, including automatic PDF reports generation, repeat start without configuration, etc.



① USB Port

② LCD Screen

③ Left Button

④ Right Button

⑤ Battery Cover

# Specifications

Model	RC-5/RC-5+	RC-5+TE
Temperature Measurement Range	-30°C~-70°C (-22°F~158°F)*	-40°C~-85°C (-40°F~185°F)*
Temperature Accuracy	±0.5°C/±0.9°F (-20°C~+40°C); ±1°C/±1.8°F (others)	
Resolution	0.1°C/°F	
Memory	Maximum 32.000 points	
Logging Interval	10 seconds to 24 hours	10 seconds to 12 hours
Data Interface	USB	
Start Mode	Press button; Use software	Press button; Auto start; Use software
Stop Mode	Press button; Auto stop; Use software	
Software	ElitechLog, for macOS & Windows system	
Report Format	PDF/EXCEL/TXT** by ElitechLog software	Auto PDF report; PDF/EXCEL/TXT** by ElitechLog software
Shelf Life	1 year	
Certification	EN12830, CE, RoHS	
Protection Level	IP67	
Dimensions	80 x 33.5 x 14 mm	
Weight	20g	

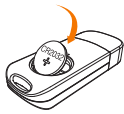
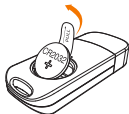
\* At ultralow temperature, the LCD is slow but does not affect normal logging. It will be back to normal after the temperature rises.

\*\* TXT for Windows ONLY

# Operation

## 1. Battery Activation


- (1) Turn the battery cover counterclockwise to open it.
- (2) Gently press the battery to hold it in position, then pull out the battery insulator strip.
- (3) Turn the battery cover clockwise and tighten it.



## 2. Install Software

Please download and install the free ElitechLog software (macOS and Windows) from Elitech US: [www.elitechstore.com/pages/download](http://www.elitechstore.com/pages/download) or Elitech UK: [www.elitechonline.co.uk/software](http://www.elitechonline.co.uk/software) or Elitech BR: [www.elitechbrasil.com.br](http://www.elitechbrasil.com.br).

## 3. Configure Parameters

First, connect the data logger to the computer via USB cable, wait until  icon shows on the LCD; then configure via:

### ElitechLog Software:

- If you do not need to change the default parameters (in **Appendix**); please click **Quick Reset** under **Summary** menu to synchronize local time before usage;
- If you need to change the parameters, please click the **Parameter** menu, enter your preferred values, and click the **Save Parameter** button to complete the configuration.

### **Warning! For first time user or after battery replacement:**

*To avoid time or time zone errors, please make sure you click **Quick Reset** or **Save Parameter** before usage to sync and configure your local time into the logger.*

## 4. Start Logging

### Press Button:

Press and hold the button for 5 seconds until the ► icon shows on the LCD, indicating the logger starts logging.

### Auto Start (RC-5+/TE only):

**Immediate Start:** The logger starts logging after removed from the computer.

**Timed Start:** The logger starts counting after being removed from the computer; it will start logging automatically after the set date/time.



*Note: If the ► icon keeps flashing, it means the logger configured with start delay; it will start logging after the set delay time elapses.*

## 5. Mark Events (RC-5+/TE only)

Double click the right button to mark current temperature and time, up to 10 groups of data. After marked, it will be indicated by Log X on the LCD screen (X means the marked group).

## 6. Stop Logging

**Press Button\*:** Press and hold the button for 5 seconds until the icon ■ shows on the LCD, indicating the logger stops logging.


**Auto Stop:** When the logging points reach the maximum memory points, the logger will stop automatically.

**Use Software:** Open ElitechLog software, click **Summary** menu, and **Stop Logging** button.

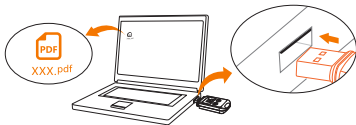


*Note: \*Default stop is via **Press Button**, if set as disabled, the button stop function will be invalid; please open the ElitechLog software and click **Stop Logging** button to stop it.*

## 7. Download Data

Connect the data logger to your computer via USB cable, wait until the icon  shows on the LCD; then download via:

- **ElitechLog Software:** The logger will auto-upload data to ElitechLog, then please click **Export** to select your desired file format to export. If data failed for auto-upload, please manually click **Download** and then follow the export operation.
- **Without ElitechLog Software (RC-5+/TE only):** Simply find and open the removable storage device **ElitechLog**, save the auto generated PDF report to your computer for viewing.



## 8. Reuse the Logger

To reuse a logger, please stopped it first; then connect it to your computer and use ElitechLog software to save or export the data.

Next, reconfigure the logger by repeating the operations in **3. Configure Parameters\***.

After finished, follow **4. Start Logging** to restart the logger for new logging.

*Warning! \* To make space for new loggings, all previous logging data inside the logger will be deleted after re-configuration.*

*If you forgot to save/export data, please try to locate the logger in the **History** menu of ElitechLog software.*

## 9. Repeat Start (RC-5+/TE only)

To restart the stopped logger, you may press and hold the left button to start logging quickly without reconfiguration.

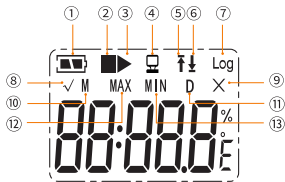
Please backup data before restart by repeating **7. Download Data - Download via ElitechLog Software**.

# Status Indication

## 1. Buttons

Operations	Function
Press and hold the left button for 5 seconds	Start logging
Press and hold the right button for 5 seconds	Stop logging
Press and release the left button	Check/Switch interfaces
Press and release the right button	Back to the main menu
Double click the right button	Mark events (RC-5+ / TE only)

## 2. LCD Screen



① Battery Level	⑦ Logging Points
② Stopped	⑧ No Alarm/Mark Success
③ Logging	⑨ Alarmed/Mark Failure
②③ Not started	⑩ Month
④ Connected to PC	⑪ Day
⑤ High Temperature Alarm	⑫ Maximum Value
⑥ Low Temperature Alarm	⑬ Minimum Value

## 3. LCD Interface

Temperature



Current Date: M-D



Logging Points



Maximum Temperature:



Current Time



Minimum Temperature:



## Battery Replacement


1. Turn the battery cover counterclockwise to open it.
2. Install a new and wide-temperature CR2032 button battery into the battery compartment, with its + side facing upward.
3. Turn the battery cover clockwise and tighten it.



## What's Included

- Data Logger x 1
- User Manual x 1
- Calibration Certificate x 1
- Button Battery x 1

### Warning

- ⓘ Please store your logger at room temperature.
- ⓘ Please pull out the battery insulator strip in the battery compartment before using.
- ⓘ For first time user: please use ElitechLog software to synchronize and configure the system time.
- ⓘ Do not remove the battery from the logger while it's recording.
- ⓘ The LCD will be auto off after 15 seconds of inactivity (by default). Press the button again to turn on the screen.
- ⓘ Any parameter configuration on ElitechLog software will delete all logged data inside the logger. Please save data before you apply any new configurations.
- ⓘ Do not use the logger for long-distance transport if the battery icon is less than half as .



# Appendix

## Default Parameters

Model	RC-5	RC-5+	RC-5+TE
Logging Interval	15 minutes	2 minutes	2 minutes
Start Mode	Press Button	Press Button	Press Button
Start Delay	0	0	0
Stop Mode	Use Software	Press Button	Press Button
Repeat Start		Enable	Enable
Circular Logging	Disable	Disable	Disable
Time Zone		UTC+00:00	UTC+00:00
Temperature Unit	°C	°C	°C
High Temperature Limit	60°C	/	/
Low Temperature Limit	-30°C	/	/
Calibration Temperature	0°C	0°C	0°C
Temporary PDF		Enable	Enable
PDF Language		Chinese/English	Chinese/English
Sensor Type	Internal	Internal	External