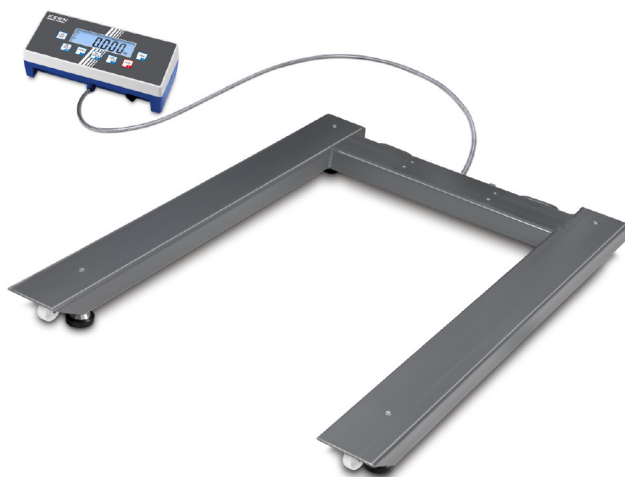


# KERN UID3000K-0M



High-resolution dual-range pallet scale with calibration approval [M] and a large number of data interfaces



## Measuring system

|   |                      |
|---|----------------------|
| Adjustment options:                             | External calibration |
| Eccentric loading at 1/3 [Max]:                 | 5 kg                 |
| Linearity:                                      | 3 kg                 |
| Load cell connection:                           | 4-wire               |
| Number of weighing ranges:                      | 1                    |
| Readability [d]:                                | 1 kg                 |
| Repeatability:                                  | 1 kg                 |
| Resolution:                                     | 3000                 |
| Stabilisation time under laboratory conditions: | 4 s                  |
| Tare range:                                     | -3 t                 |
| Warm up time:                                   | 10 min               |
| Weighing capacity [Max]:                        | 3 t                  |
| Weighing system:                                | Strain gauge         |
| Weighing units:                                 | g oz PCS kg lb tJ HJ |

## Display

|                               |          |
|-------------------------------|----------|
| Display digit height (large): | 2,500 cm |
| Display digit height (small): | 2,500 cm |

## Technical data about verification

|   |         |
|---|---------|
| Minimum load [Min]:                             | 20 kg   |
| Periodic Verification for Italy:                | 969-112 |
| Verification approval conforming to 2014/31/EU: | yes     |
| Verification by KERN possible:                  | yes     |
| Verification class:                             | III     |
| Verification value [e]:                         | 1 kg    |

## Functions

|  |     |
|--|-----|
| Counting function:                                 | yes |
| Data hold function:                                | yes |
| Percentage determination:                          | yes |
| Time display:                                      | yes |
| Vibration-free weighing (Animal weighing program): | yes |
| Weighing with tolerance range:                     | yes |

## Environmental conditions

|                                |        |
|--------------------------------|--------|
| Maximum humidity:              | 95 %   |
| Maximum operating temperature: | 40 °C  |
| Minimum ambient temperature:   | -10 °C |
| Minimum humidity:              | 10 %   |

## Power supply

|                                 |                                     |
|---------------------------------|-------------------------------------|
| Battery:                        | no battery                          |
| Charging time:                  | 3 h                                 |
| Input voltage:                  | 100V-240V AC 50/60Hz<br>0,400 Amax  |
| Mains adapter:                  | Mains adapter external              |
| Mains adapter/adaptor included: | UK US EURO                          |
| Operating time (Backlight off): | 43 h                                |
| Operating time (Backlight on):  | 26 h                                |
| Rechargeable battery:           | Rchrg. battery optional -<br>intern |

## Services (optional)

|   |         |
|---|---------|
| Adjustment at the location of installation: | 961-252 |
| DAkkS Certificate:                          | 963-132 |
| Verification:                               | 965-232 |

## Category

|                |              |
|----------------|--------------|
| Brand:         | KERN         |
| Category:      | Balances     |
| Product Group: | Pallet scale |

## Packaging & shipping

|                               |                     |
|-------------------------------|---------------------|
| Delivery:                     | 48 h                |
| Dimensions packaging (WxDxH): | 1270 x 900 x 260 mm |
| Gross weight:                 | 65 kg               |
| Net weight:                   | 44 kg               |
| Shipping method:              | Freight forwarder   |

## Construction

|                                       |                   |
|---------------------------------------|-------------------|
| Cable length:                         | 5 m               |
| Cable length of display device:       | 5 m               |
| Dimensions of display device (WxDxH): | 268 x 115 x 80 mm |

# KERN UID3000K-0M



High-resolution dual-range pallet scale with calibration approval [M] and a large number of data interfaces

Dimensions of weighing plate (WxDxH): 1195 x 840 x 110 mm

Level indicator: yes

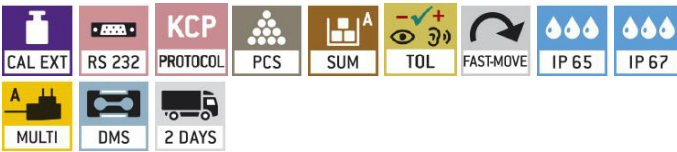
Revolving screw feet: yes

Wall mount: yes

Weighing surface (WxD): 1195 x 840 mm

## Piktogramme

### STANDARD



### OPTION



### FACTORY

