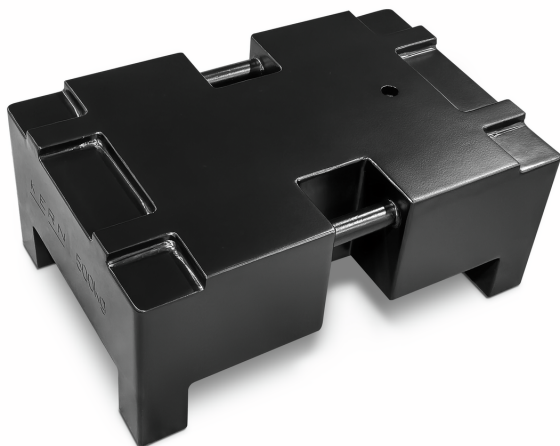


KERN 346-83

KERN

Individual weight, OIML Class M1, 500 kg, Heavy Duty Weight, steel, lacquered



Net weight approx. 500 kg

Gross weight approx. 500 kg

Shipping weight 500 kg

Pictograms

STANDARD



Category

| | |
|------------------|-------------------|
| Brand | KERN |
| Product category | Individual weight |
| Product group | OIML M1 |
| Product family | 346 |

Measuring System

| | |
|--|--------|
| Test weight - volume (cm ³) | 69444 |
| Test weight - volume uncertainty (cm ³) | 5787 |
| Test weight - Density (kg/m ³) | 7100 |
| Test weight - Density uncertainty (kg/m ³) | 600 |
| Test weight - Density [Min] (OIML) | 3000 |
| Test weight - nominal value | 500 kg |
| OIML-compliant | ✓ |
| Weight OIML class | M1 |
| Permissible tolerance according to OIML (+/-) | 25 g |

Construction

| | |
|---------------------------|-------------------|
| Shape weight | Heavy Duty Weight |
| Dimensions weight (W×D×H) | 760×500×320 mm |
| Material | steel, lacquered |

Services (optional)

| | |
|--------------------------------------|---------|
| Article number for DAkkS calibration | 962-693 |
|--------------------------------------|---------|

Packing & Shipping

| | |
|------------------------------|----------------|
| Delivery time | 2 d |
| Dimensions packaging (W×D×H) | 760×500×320 mm |
| Shipping method | Freight |