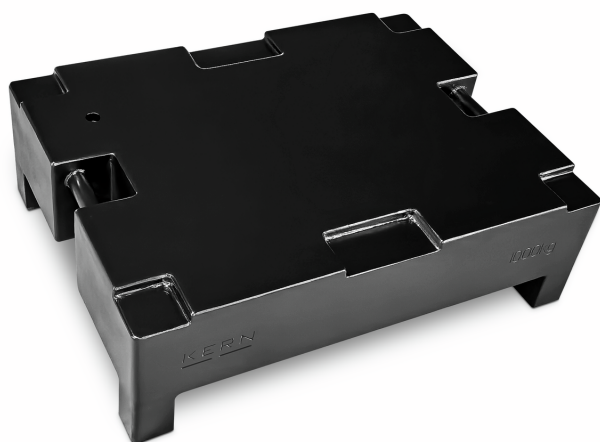


# KERN 346-84

**KERN**

Individual weight, OIML Class M1, 1000 kg, Heavy Duty Weight, steel, lacquered



Net weight approx. 1000 kg

Gross weight approx. 1000 kg

Shipping weight 1000 kg

## Pictograms

## STANDARD



## Category

Brand	KERN
Product category	Individual weight
Product group	OIML M1
Product family	346

## Measuring System

Test weight - volume (cm <sup>3</sup> )	138889
Test weight - volume uncertainty (cm <sup>3</sup> )	11574
Test weight - Density (kg/m <sup>3</sup> )	7100
Test weight - Density uncertainty (kg/m <sup>3</sup> )	600
Test weight - Density [Min] (OIML)	3000
Test weight - nominal value	1000 kg
OIML-compliant	✓
Weight OIML class	M1
Permissible tolerance according to OIML (+/-)	50 g

## Construction

Shape weight	Heavy Duty Weight
Dimensions weight (W×D×H)	1000×760×310 mm
Material	steel, lacquered

## Services (optional)

Article number for DAkkS calibration	962-694
--------------------------------------	---------

## Packing & Shipping

Delivery time	2 d
Dimensions packaging (W×D×H)	1000×760×310 mm
Shipping method	Freight